

ROYAL  TALENS

ACRYLIC COLOUR



van Gogh
The Quality Brand



VAN GOGH THE QUALITY BRAND

Quality, that's what you choose. That is why you use Van Gogh paint, so you can focus completely on your creativity and the painting process. Thanks to the lively and intense colours you can do anything in your paintings. Your inspiration determines the direction and the paint is your instrument. Van Gogh is therefore the ideal brand for the serious artist for whom quality is important.



Van Gogh acrylic colour is a versatile paint with a rich palette of 40 strong and brilliant colours. The acrylic paint is pasty so that the brush stroke remains clearly visible. You can also mix the paint with water to make it thinner or more transparent. Acrylic colours are indelible when dry. Due to the short drying time it is possible to paint various layers over one another relatively quickly. The high degree of lightfastness ensures that the works of art retain their lively and original colours for a very long time. Van Gogh acrylic colours do justice to your creations.

VAN GOGH ACRYLIC COLOUR

HIGH QUALITY

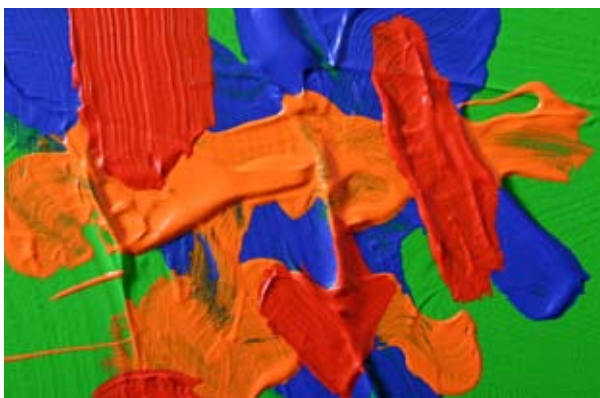


- The colours of Van Gogh acrylics are strong and brilliant, thanks to the high content of pigment and the finely ground, purest pigments.
- Van Gogh acrylic colour is a pasty paint so the brush stroke remains clearly visible.
- Van Gogh acrylic colour offers a choice from four gradations of opacity (transparent, semi-transparent, semi-opaque and opaque).
- The paint is good to highly lightfast, so that the works of art retain their original condition for a very long time.

VAN GOGH ACRYLIC COLOUR OFFERS MANY POSSIBILITIES

Van Gogh acrylic colour is a versatile paint that can be used in various ways. Some examples:

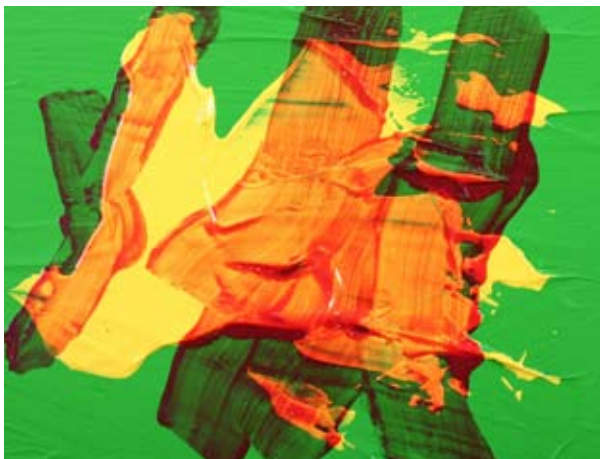
LAYERED PAINTING



It is possible to apply acrylic colours in almost unlimited numbers of layers, pure or thinned with water. The paint's drying time depends on the layer thickness, the temperature and the humidity, but is relatively short. It is therefore possible to work quickly! The use of (semi-)opaque colours is preferred (indicated on the tube with ■ or ▣) if a colour underneath should no longer be visible.

GLAZING

Acrylic colours can also be used for glazing. For this apply a coloured transparent layer on top of a dry underpainting. The best results can be achieved by using a transparent colour, indicated on the tube with or . Pure paint can be spread thinly. If you prefer a less colourful glaze, thin the paint with water or acrylic medium.



MIXED TECHNIQUE



The versatility of acrylic colours is also shown in a mixed technique. Due to the excellent adhesive strength of acrylic colours it is possible to incorporate all kinds of materials which you would not usually paint, such as paper, carton, fabric and sand. Fine materials such as sand, sawdust and small stones have to be mixed in the paint well before applying them to the painting. Express your creativity!

PALETTE KNIFE TECHNIQUE



With a palette knife it is possible to apply flat brush strokes and strong textures in any desired thickness. The bottom of the knife is highly suited for both mixing paint on the palette and applying the paint. A palette knife is easy to clean with an old cloth or a tissue.

VAN GOGH BRUSHES

For every painting technique the right brush! There is a complete series of brushes available in the Van Gogh range. The Van Gogh brushes are made with care and craftsmanship. There are various brush forms and hair types of excellent quality from which to choose.

For acrylic colours it is best to use brushes with firm hairs due to the wear resistance of the hair bundle.



Series 210 and 211 (hog bristle)
for thinned and unthinned paint.



Series 232, 234 and 235 (ox hair)
for thinned paint, glazing and fine art
techniques.



Series 294, 295 and 296 (polyester fibres)
for thinned and unthinned paint.



HOW TO LOOK AFTER YOUR BRUSHES?

- Keep the brushes wet during the work, so that the paint cannot dry.
- After use clean brushes well using soap and warm water.
- After cleaning shape the hair again.
- Store your brushes in an upright position with the hair pointing up.

GROUNDS FOR ACRYLIC COLOURS

ROYAL TALENS OFFERS A WIDE RANGE OF
HIGH-QUALITY GROUNDS FOR ACRYLIC COLOURS:



- Stretched canvas: stretched canvas of prepared linen or cotton in various sizes and models. There are also 3D canvases available, with extra wide, paintable sides.
- Canvas boards: prepared cotton, stretched on MDF board in various sizes.

Van Gogh acrylic colours can be used on all sorts of grounds such as paper, cardboard, wood and stone provided these are free of grease and sufficiently absorbent.



AUXILIARIES FOR VAN GOGH ACRYLIC COLOURS

Auxiliaries are not really necessary when working with acrylic colours as acrylic colours can just be thinned with water. Yet some auxiliaries can be useful to provide special effects. Under the brand name Amsterdam, Royal Talens offers a wide range of auxiliaries for acrylic colours in various packages.

Acrylic medium gloss 012 and matt 117: makes the paint thinner and more transparent. Due to the acrylic resin present the pigments are optimally protected.

Gel medium 094 / 080, Heavy gel medium 015 / 020 and Extra heavy gel medium 021 / 022: milky-white pastes that, when used pure, dry up colourless and transparent. When mixed with acrylic colours they provide the paint with more volume, texture and brush stroke. Due to the high adhesive strength it is ideal for mixed techniques in combination with the most diverse materials, such as sand, little stones, wood, paper and cardboard. Every type is available in both gloss and matt.

Modeling paste 1003: for making relief grounds and textured paint layers, if desired mixed with acrylic colours.

Thickening medium 040: makes the paint very thick without the colour becoming any lighter or losing any of its colour intensity. Improves the brush stroke considerably.

Acrylic Retarder 070: delays the drying process of acrylic colours so that it is possible to work wet-on-wet a little longer. Use this product sparingly.

Acrylic varnish 114 / 115: to protect your painting and for an even degree of sheen. Available in a gloss and a matt version, both in bottle and spray can.

Acrylic remover 013: removes dried acrylic paint from brushes

ACRYLIC COLOUR

+++



396

NAPHTHOL RED MEDIUM
NAFTOLROOD MIDDEL
ROUGE NAPHTOL MOYEN
NAPHTHOLROT MITTEL
ROJO NAFTOL MEDIO



Gogh

VAN GOGH RANGE OF ACRYLIC COLOURS

All the Van Gogh acrylic colours are available in 40 ml aluminium tubes. Titanium white and Oxide black are also available in 150 ml tubes. There are various sets and artists' boxes available, for yourself to work with or to give as a gift:



Cardboard set
with 5 tubes 40 ml



Cardboard set
with 10 tubes 40 ml



Cardboard Combi set
with 10 tubes 40 ml and
accessories

WOODEN ACRYLIC COLOURS ARTISTS' BOXES

Basic Box

with 10 tubes 40 ml
and accessories



Box Inspiration

with 14 tubes 40 ml
and accessories

van Gogh

The Quality Brand

Van Gogh offers a wide range of artists' and drawing products. In addition to Van Gogh acrylic colours, there is a complete range of oil colours, water colours, pastels (oil pastels and carré pastels) and pencils available.

Naturally from
Royal Talens

For over 100 years Royal Talens has been a renowned manufacturer and worldwide supplier of quality colour materials and artists' materials.

www.royaltalens.com



Colourfully yours,
Royal Talens

SYMBOLS ON THE TUBE



EXPLANATION OF THE SYMBOLS ON THE TUBE

The following symbols are used:

1 LIGHTFASTNESS

+++ = at least 100 years lightfast under museum conditions.

++ = 25 – 100 years lightfast under museum conditions.

The lightfastness of all colours has been tested according to the ASTM norm D4303.

2 TRANSPARENCY/ OPACITY

A paint's degree of opacity/transparency is indicated with the following symbols:

□ = transparent

◻ = semi-transparent

◼ = semi-opaque

■ = opaque

Every pigment has its own specific characteristics as far as opacity and transparency are concerned. There are pigments that are very opaque and those that are highly transparent. There are also pigments with a transparency or opacity somewhere in between.

The information regarding the transparency/opacity is important to the artist in connection with certain techniques, such as glazing. Transparent colours fully show the colour of the ground, whereas opaque colours are opaque to such a degree that they do not or hardly show the colour of the ground. The layer thickness does of course also play a role in this.

3 COLOUR NUMBER

Instead of the colour name this number can be used. The colour number is always associated with the same colour name.

4 PIGMENT

Refers to the pigments used in the product.

COLOUR CHART VAN GOGH ACRYLIC COLOUR



Titanium white
+++ 105 ■
PW6



Azo yellow lemon
++ 267 ☑
PY3



Azo yellow light
++ 268 ☑
PY3/PY74



Naples yellow red
+++ 224 ■
PW6/PY42/P043



Azo orange
++ 276 ☑
P034/PY74



Vermillion
++ 311 ☑
P034



Carmine deep
++ 322 ☑
PR12/PV19



Quinacridone rose
+++ 366 □
PV19



Permanent madder lake
+++ 336 ☑
PR264



Cobalt blue (ultram.)
+++ 512 ☑
PB29/PB15



Phthalo blue
+++ 570 □
PB15



Prussian blue phthalo
+++ 566 ☑
PB15/PBk11



Permanent green medium
+++ 614 ☑
PG7/PY74



Emerald green
+++ 615 ■
PG7/PY74/PW6



Permanent green deep
+++ 619 □
PG7/PY128



Yellow ochre light
+++ 228 ■
PBr24



Yellow ochre
+++ 227 ■
PY42



Raw sienna
+++ 234 ☑
PY42



Burnt umber
+++ 409 ☑
PR101/PBk11



Vandyke brown
+++ 403 ☑
PBk11/PR101



Payne's grey
+++ 708 ☑
PBk11/PB15/PV19

Explanation of the symbols

Lightfastness

+++ = at least 100 years lightfast under museum conditions (31 colours).

++ = 25 – 100 years lightfast under museum conditions (9 colours).

The lightfastness has been tested according to the ASTM standard D4303.

Transparency/Opacity

□ = transparent (6 colours)

☑ = semi-transparent (9 colours)

☑ = semi-opaque (14 colours)

■ = opaque (11 colours)



Azo yellow medium
+++ 269
PY74



Azo yellow deep
+++ 270
PY74/PO43



Naples yellow deep
+++ 223
PW6/PBr24/PY154



Naphthol red light
++ 398
PR112/PO34



Naphthol red medium
++ 396
PR112



Carmine
+++ 318
PR23



Permanent red violet
+++ 567
PR122/PV23



Permanent blue violet
+++ 568
PV23/PR122



Ultramarine
+++ 504
PB29



Brilliant blue
+++ 564
PB15/PG7/PW6



Turquoise blue
+++ 522
PB15/PG7/PW6



Permanent green light
+++ 618
PG7/PY74



Phtalo green
+++ 675
PG7



Sap green
++ 623
PG8



Chromium oxide green
+++ 668
PG17



Burnt sienna
+++ 411
PR101



Light oxide red
+++ 339
PR101



Raw umber
+++ 408
PY42/PBk11



Oxide black
+++ 735
PBk11

The colours illustrated correspond with the real colours as much as possible.

Colour Index

The pigments used in Van Gogh paint have been indicated according to the Colour Index. The Colour Index is an internationally used system for pigments and dyes that have been used in all types of paint (therefore also in artists' paint). The system is based on a number and name associated to the chemical structure. Originally the Colour Index was developed in the U.S.A., hence the use of English descriptions of the chemical class. The abbreviations mean the following:

PW = pigment white
PO = pigment orange
PB = pigment blue
PG = pigment green
PBk = pigment black
PY = pigment yellow
PR = pigment red
PV = pigment violet
PBr = pigment brown

VAN GOGH ACRYLIC COLOUR HIGH QUALITY

- STRONG AND BRILLIANT COLOURS
- HIGH CONTENT OF PIGMENT
- PASTY PAINT SO THE BRUSH STROKE REMAINS CLEARLY VISIBLE
- GOOD TO HIGHLY LIGHTFAST

van Gogh
The Quality Brand

88220114 2011

ROYAL  TALENS

P.O. Box 4, Apeldoorn, NL
www.royaltalens.com

